

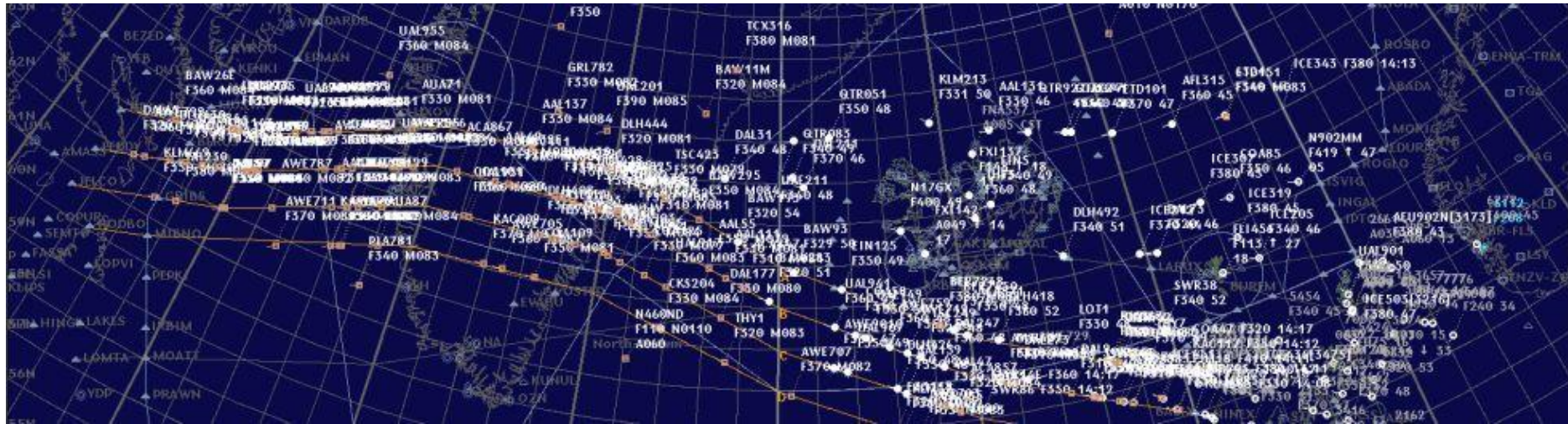


Air Traffic Control and Volcanic Activity



Steinunn - Air Traffic Service Procedures Specialist

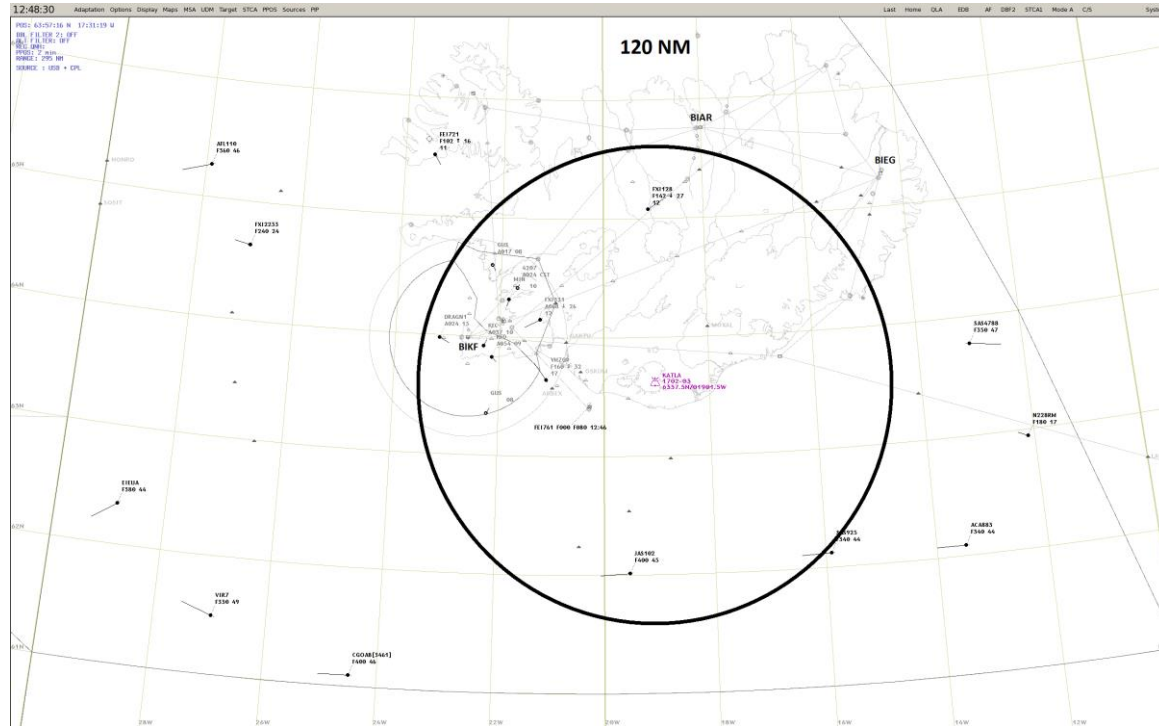
Air Traffic Control (ATC) and Volcanic Activity



ATC and Volcanoes

ATC Initial Reaction

- *Danger Area*
- *Circle of 120NM radius*
- *All traffic out of the area*
- *Stop departures*
- *No ATC clearance*
- *Reroutes to avoid the area*
- *Information to pilots*
- *NOTAM*

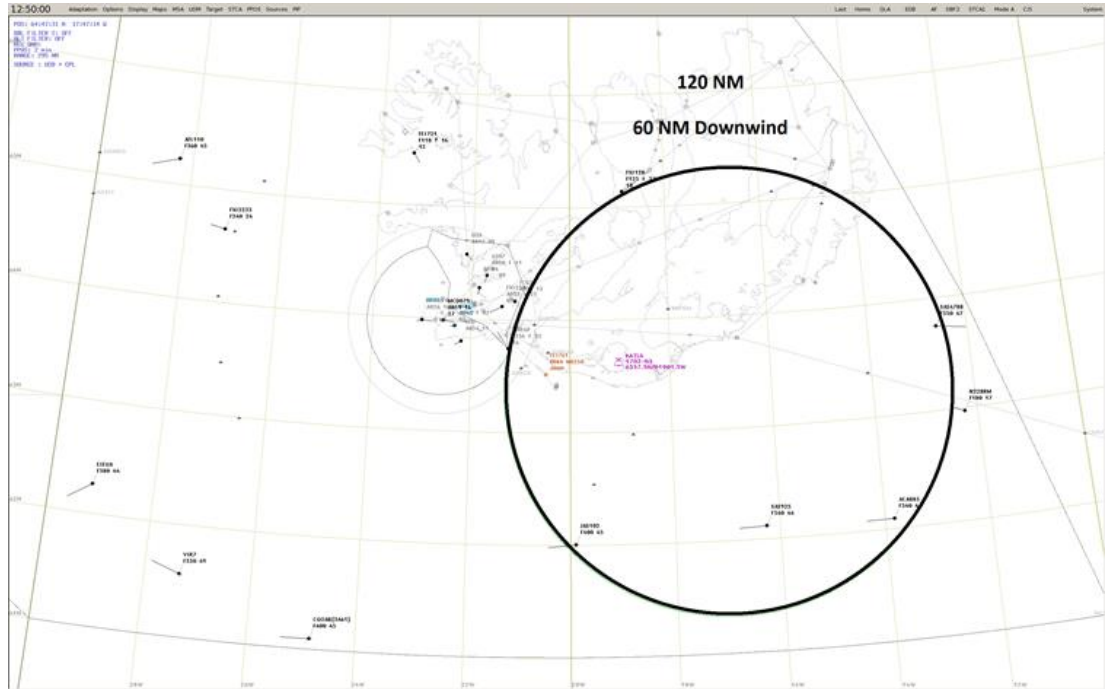


ATC and Volcanoes

Iceland Met Office (IMO)

Warning SIGMET

- > Name of Volcano
- > Location
- > ICAO number
- > Wind speed and direction
- > 60nm downwind



ATC and Volcanoes

Working in accordance with:
ICAO NAT doc 006 „Volcanic Ash
Contingency Plan“ and Checklist

Supervisor:

Informing departments within Isavia
and the adjacent areas and others
both Domestic and International



4C Flugstjórn

Eldgos

- _____ Afla upplýsinga um staðsetningu gosstöðvarinnar, hæð og umfang gosmakkar
 - **Veðurstofa IMO 522-6311 eða 522-6313**
- _____ Tilkynna Veðurstofu strax, berist fyrstu upplýsingar til flugstjórnar
- _____ Varðstjóri kallar á aðalvarðstjóra ef gos hefst milli 23:00 og 07:00
- _____ Sækja eftirfarandi skjöl á netdrifum og/eða í eldgosamöppu:
UD VOL III, kafli 4 Viðbráð við elgusum og hætta á þeim
Rekstrarhandbók Isavia VL420 05 Hættusvæði (DA) vegna eldgoss
- _____ Kalla á starfsmann til þess að senda út NOTAM:
 - **ET 4294, 895-1233, hs 555-1233**
 - **BL 4265, 699-7228, hs 587-0766**
 - **Aðrir: KT, RR, U, MM**
- _____ Tilkynna yfirflugumferðarstjóra **AS 4140. 699-8504, hs. 562-8504**
- _____ Tilkynna Fjarskiptamiðstöðinni í Gufunesi **563-6502**
- _____ Tilkynna næstu flugstjórnarmiðstöðvum:
 QX GX OB EG SV PX FAY KEF RK TWR AR TWR SF FIS
 SF APP MM AFIS VELLIR (VM HN EG VO TH HU GJ IS BD)
- _____ Áframsenda til Veðurstofu allar breytingar á hæð og umfangi gosmakkar
- _____ Senda flugvélum á flugi öll viðvörðun SIGMET frá Veðurstofu Íslands
- _____ Hringja í **Neyðarlínu 112** og óska eftir að virkja boðunarahópin:
 - „**Isavia höfuðstöðvar – Vegna eldgoss Isavia**“
- _____ Tilkynna óskuvakt Isavia skv. lista fyrir neðan:
(Hringja í 2 aðila, einn frá FLS og einn frá Vellir, þeir hringja í hina)



Deild	Nafn	Sími 1	Sími 2
FLS	Helgi Björnsson (HB)	894 0406	424 4147
FLS	Sigurleifur Kristjánsson (SL)	897 0336	424 4123
FLS	Haraldur Ólafsson (HZ)	664 0370	425 6061
FLS	Arni Guðbrandsson (AI)	891 6464	425 4343
Vellir	Arni Birgisson	894 8272	424 4237
Vellir	Jón Baldvin Pálsson	898 0098	424 4135
Vellir	Haukur Hauksson	893 0794	424 4114
Vellir	Omar Sveinsson	664 0366	425 6070
Vellir	Richardur Þór Asgeirsson	863 3945	424 4235

- _____ Tilkynna talsmanni Isavia **4252, 856-4540, 564-1898**
- _____ Tilkynna Sigurleifi Kristjánssyni fyrir **EACCC 4123, 897-0336**

ATC and Volcanoes

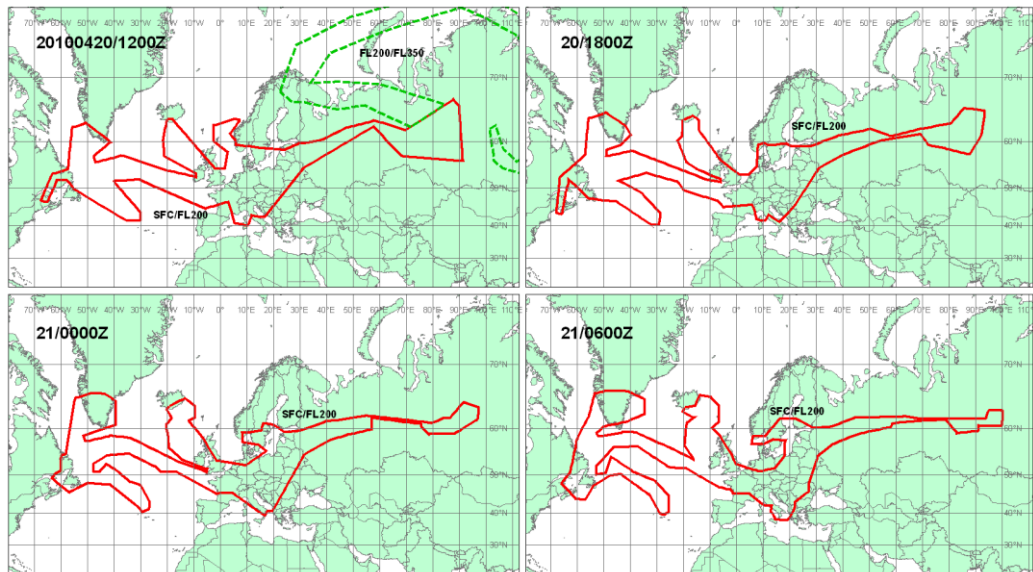
London VAAC starts publishing
Distribution of information

SIGMETs

Pilot Reports

ATCO provides information on
forecast ash distribution to flight
crew.

Improvements in forecasting is
the most important for the safety
of aircraft



VA ADVISORY
DTG: 20100420/1200Z
VAAC: LONDON
VOLCANO:
EYJAFJALLAJOKULL 1702-02
PSN: N6338 W01937
AREA: ICELAND

SUMMIT ELEV: 1666M
ADVISORY NR: 2010/026
INFO SOURCE: ICELAND MET OFFICE
AVIATION COLOUR CODE: RED
ERUPTION DETAILS: ERUPTION CONTINUING
TO AROUND 3500M TO 4500M.

RMK: NO SIG ASH ABOVE FL350. NO SIG ASH ABOVE FL200 FROM
1800Z. ASH CONCENTRATIONS UNKNOWN.
NXT ADVISORY: 20100420/1800Z

ATC and Volcanoes

Volcanic Exercises

VOLCICE

Isavia

Iceland Met Office

London VAAC

VOLCEX

ANSP's

London VAAC

Toulouse VAAC

Eurocontrol

Met Offices

NOTAM Offices



ATC and Volcanoes

Thank You

Questions?